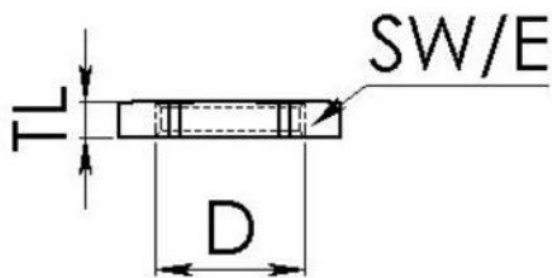


SPRINT




halogen


Zakres temperatury -40 ° C - 100 ° C

Materiał Poliamid wzmocniony włóknem

Produkty mogą różnić się rozmiarem, kolorem i wyglądem od przedstawionych. Jeśli potrzebujesz dodatkowych informacji lub dostosowania, skontaktuj się z nami bezpośrednio.



WISKA-No.	Type	RAL-No.			TL (mm)	
10060770	EMUG 12	RAL 7035	M 12x1,5	18 mm	5 mm	100
10060771	EMUG 16	RAL 7035	M 16x1,5	22 mm	5 mm	100
10060772	EMUG 20	RAL 7035	M 20x1,5	27 mm	5 mm	100
10060773	EMUG 25	RAL 7035	M 25x1,5	32 mm	6 mm	100
10060774	EMUG 32	RAL 7035	M 32x1,5	40 mm	6 mm	100
10060775	EMUG 40	RAL 7035	M 40x1,5	50 mm	7 mm	50
10060776	EMUG 50	RAL 7035	M 50x1,5	60 mm	7 mm	25
10060777	EMUG 63	RAL 7035	M 63x1,5	75 mm	7 mm	10
10061780	EMUG 12	RAL 9005	M 12x1,5	18 mm	5 mm	100
10061781	EMUG 16	RAL 9005	M 16x1,5	22 mm	5 mm	100
10061782	EMUG 20	RAL 9005	M 20x1,5	27 mm	5 mm	100
10061783	EMUG 25	RAL 9005	M 25x1,5	32 mm	6 mm	100
10061784	EMUG 32	RAL 9005	M 32x1,5	40 mm	6 mm	100
10061785	EMUG 40	RAL 9005	M 40x1,5	50 mm	7 mm	50
10061786	EMUG 50	RAL 9005	M 50x1,5	60 mm	7 mm	25
10061787	EMUG 63	RAL 9005	M 63x1,5	75 mm	7 mm	10
10062712	EMUG 12	RAL 7001	M 12x1,5	18 mm	5 mm	100
10062713	EMUG 16	RAL 7001	M 16x1,5	22 mm	5 mm	100
10062714	EMUG 20	RAL 7001	M 20x1,5	27 mm	5 mm	100
10062715	EMUG 25	RAL 7001	M 25x1,5	32 mm	6 mm	100
10062716	EMUG 32	RAL 7001	M 32x1,5	40 mm	6 mm	100
10062717	EMUG 40	RAL 7001	M 40x1,5	50 mm	7 mm	50
10062718	EMUG 50	RAL 7001	M 50x1,5	60 mm	7 mm	25



EU DECLARATION OF CONFORMITY



WISKA Hoppmann & Mulsow GmbH
Kisdorfer Weg 28
24568 Kaltenkirchen
Germany



declares that the following product:

Product designation:	Locknut
Type designation:	EMUG ** / EMUF **
Approval number:	deleted

Description: Locknut for electrical installation
corresponds to all the relevant provisions of the directives listed below and valid harmonized and / or international and national standards - including all applicable changes at this time of issuing this document.

Directive	Standard
2014/35/EU Electrical apparatus (Low voltage directive)	EN 60423:2007 (DIN EN 60423:2008)
2014/34/EU Equipment and protective systems intended for use in potentially explosive atmospheres (ATEX)	Not applicable acc. to article 1, para. 1
2014/30/EU Electromagnetic compatibility (EMC directive)	Not applicable acc. to article 2, para. 2d)
2006/42/EC Machinery (machinery directive)	Not applicable acc. to article 1

Name and address of the person who is authorized to compile the technical documentation together:

Sven Laudan
WISKA Hoppmann & Mulsow GmbH
Kisdorfer Weg 28
24568 Kaltenkirchen / Germany

Kaltenkirchen, 2016-08-31

.....
Head of Development CAS

