

## SolarTop 24

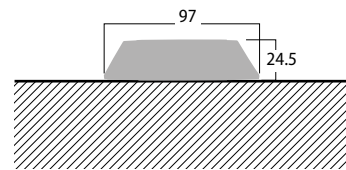
### LED photovoltaic road marker

Not carriageable

The product must be installed outside of the roadway



Compliance	<b>EN1463-3</b>
LED colour	●● ●● ○○ ○● Double side
Light	<b>Steady / Flashing</b>
Working	☾ <b>Only night</b>
Storage	<b>Ni-Mh battery</b>
Material	<b>Die-cast aluminum</b>
Dimensions	<b>97 x 110 x 24.5 mm</b>



## SolarGround 2

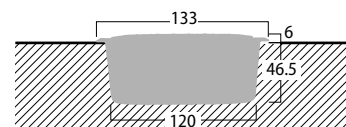
### Flush mount photovoltaic LED marker

Carriageable

Even if carriageable the product must be installed outside of the roadway



Compliance	<b>EN1463-3</b>
LED colour	○ Single side ○○ Double side
Light	<b>Steady / Flashing</b>
Working	☾ <b>Only night</b>
Storage	<b>Ni-Mh battery</b>
Material	<b>Die-cast aluminum</b>
Dimensions	<b>Ø133 x 52.5 mm</b>



# SolarTop 24

## TECHNICAL FEATURES



### Description

**NOT CARRIAGEABLE** LED photovoltaic road marker. The product must be installed outside the roadway

### OPTICAL FEATURES

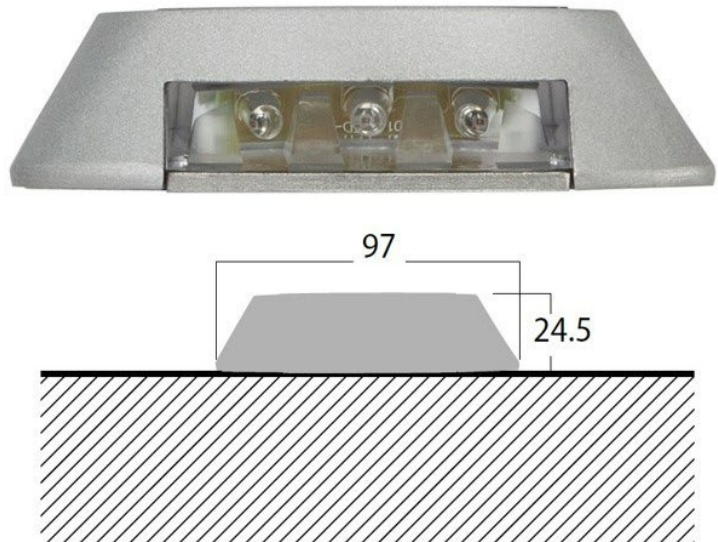
Compliance	UNI EN1463-3	
Light source	3x2 LED	
Optics	Double-side	
Colors	Amber / Red / White / Red-White	
Luminous Intensity	> 9000 mcd	
Type of Light	Steady Light	Flashing Light at 180 f/min
Operation	Night Only - Crepuscular Turning ON	
Optical Group Life	> 10 Years	

### ELECTRICAL FEATURES

Power Supply	300 mW Photovoltaic Panel
Battery	Ni-Mh Battery (Autonomy 20 days)

### MECHANICAL FEATURES

Operating Temperature	-10 °C ÷ +55 °C
Materiale	Die-cast Aluminum
IP Protection Degree	IP68
Weight	320 g
Dimensions	110 mm x 97 mm x 24.5 mm
Fixing	2 fixing holes



Rev. 3.0 04/02/2023		Approved TEC		Approved AQ
------------------------	--	--------------	--	-------------

# SolarTop 80

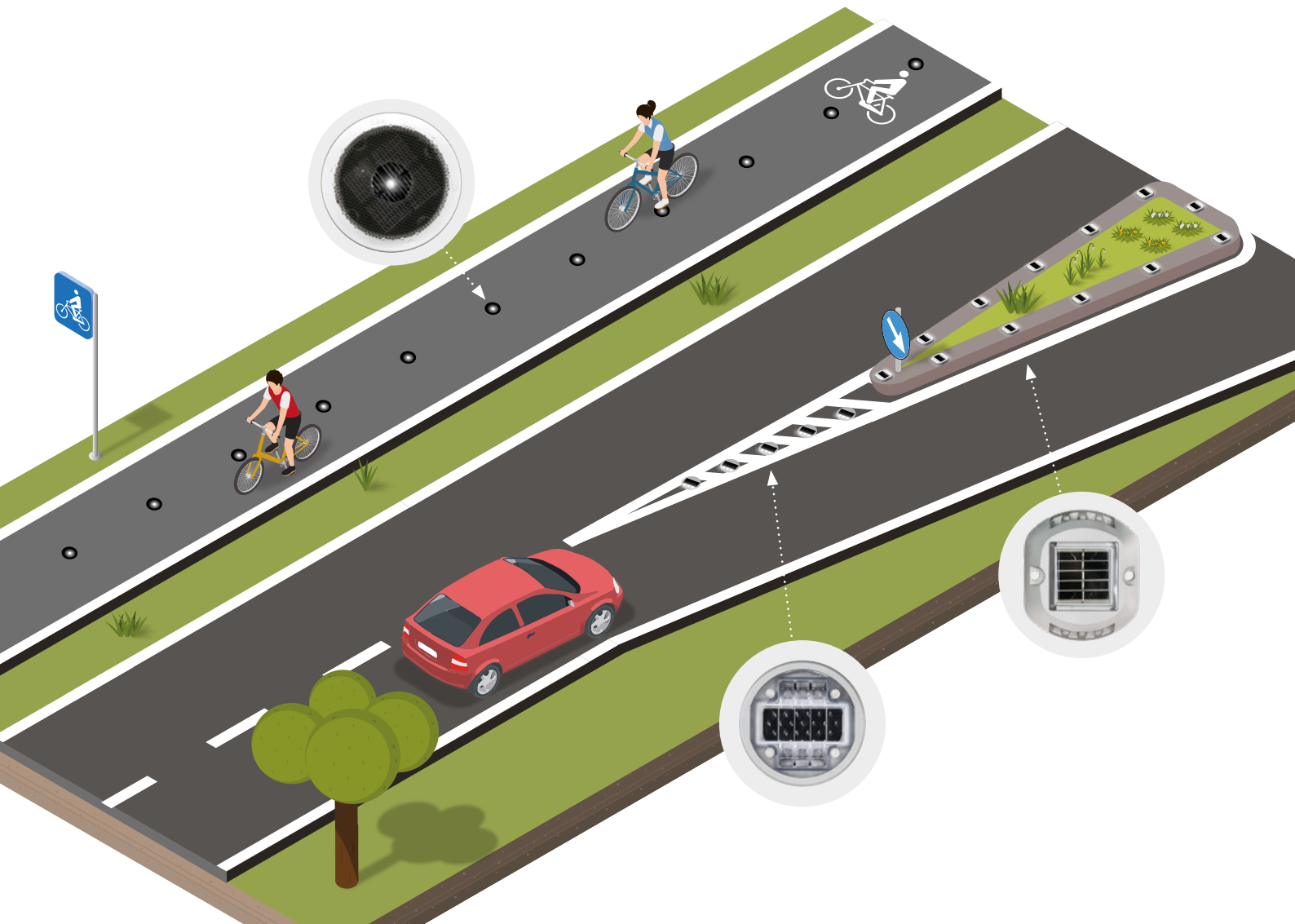
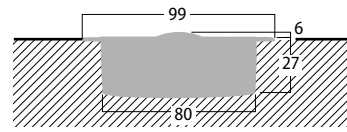
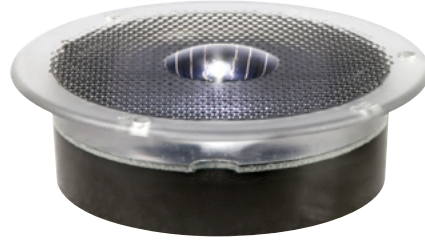
## LED photovoltaic road marker

Not carriageable

The product must be installed outside of the roadway



Compliance	<b>EN1463-3</b>
LED colour	○ 360°
Light	<b>Steady</b>
Working	<b>Only night</b>
Storage	<b>Lithium battery</b>
Material	<b>High-strength polymer</b>
Dimensions	<b>Ø99 x 33 mm</b>



# SolarTop 80

## TECHNICAL FEATURES



### Description

**NOT CARRIAGEABLE** LED photovoltaic road marker. The product must be installed outside the roadway

### OPTICAL FEATURES

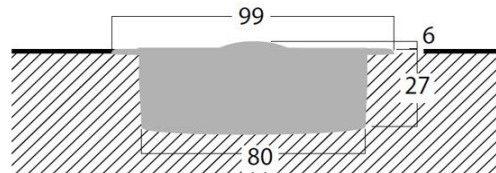
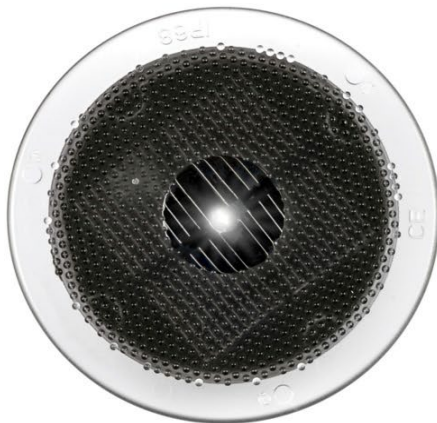
Compliance	UNI EN1463-3
Light source	1 LED
Optics	Omnidirectional
Colors	White / White with Bat Hat
Type of Light	Steady Light
Operation	Night Only - Crepuscular Turning ON
Optical Group Life	> 100'000 hours

### ELECTRICAL FEATURES

Power Supply	Photovoltaic Panel
Battery	Ni-Mh Battery (Autonomy 20 days)

### MECHANICAL FEATURES

Operating Temperature	-20 °C ÷ +70 °C
Material	High strength Polymer
IP Protection Degree	IP68
Weight	90 g
Dimensions	∅ 99 mm x 33 mm
Fixing	Recessed in pavement



Rev. 3.0  
06/04/2023

Approved TEC

Approved AQ

## SolarTop 24

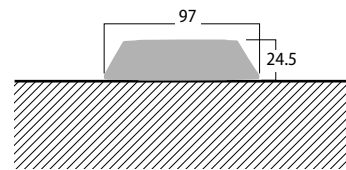
### LED photovoltaic road marker

Not carriageable

The product must be installed outside of the roadway



Compliance	<b>EN1463-3</b>
LED colour	●● ●● ○○ ○● Double side
Light	<b>Steady / Flashing</b>
Working	☾ <b>Only night</b>
Storage	<b>Ni-Mh battery</b>
Material	<b>Die-cast aluminum</b>
Dimensions	<b>97 x 110 x 24.5 mm</b>



## SolarGround 2

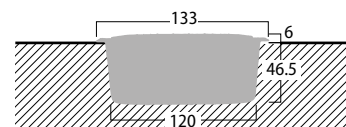
### Flush mount photovoltaic LED marker

Carriageable

Even if carriageable the product must be installed outside of the roadway



Compliance	<b>EN1463-3</b>
LED colour	○ Single side ○○ Double side
Light	<b>Steady / Flashing</b>
Working	☾ <b>Only night</b>
Storage	<b>Ni-Mh battery</b>
Material	<b>Die-cast aluminum</b>
Dimensions	<b>Ø133 x 52.5 mm</b>



# SolarGround 2

## TECHNICAL FEATURES



### Description

Carriageable LED photovoltaic road marker. Even if carriageable the product must be installed outside of the roadway

### OPTICAL FEATURES

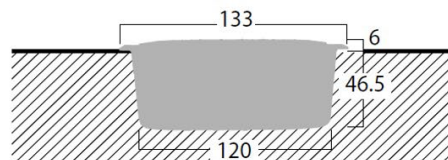
Compliance	UNI EN1463-3	
Light source	3 LED / 3x2 LED	
Optics	Single-Side / Double-Side	
Colors	White	
Luminous Intensity	> 2000 mcd	
Type of Light	Steady Light	Flashing Light at 180 f/min
Operation	Night Only - Crepuscular Turning ON	
Optical Group Life	> 50'000 Hours	

### ELECTRICAL FEATURES

Power Supply	Photovoltaic Panel
Battery	Ni-Mh Battery (Autonomy 80 Hours)

### MECHANICAL FEATURES

Mechanical resistance	20 t
Operating Temperature	-10 °C ÷ +55 °C
Material	Die-cast Aluminum
IP Protection Degree	IP68
Weight	650 g
Dimensions	Ø 133 mm x 52.5 mm
Fixing	Recessed in pavement



Rev. 3.0  
06/04/2023

Approved TEC

Approved AQ

# Side 25

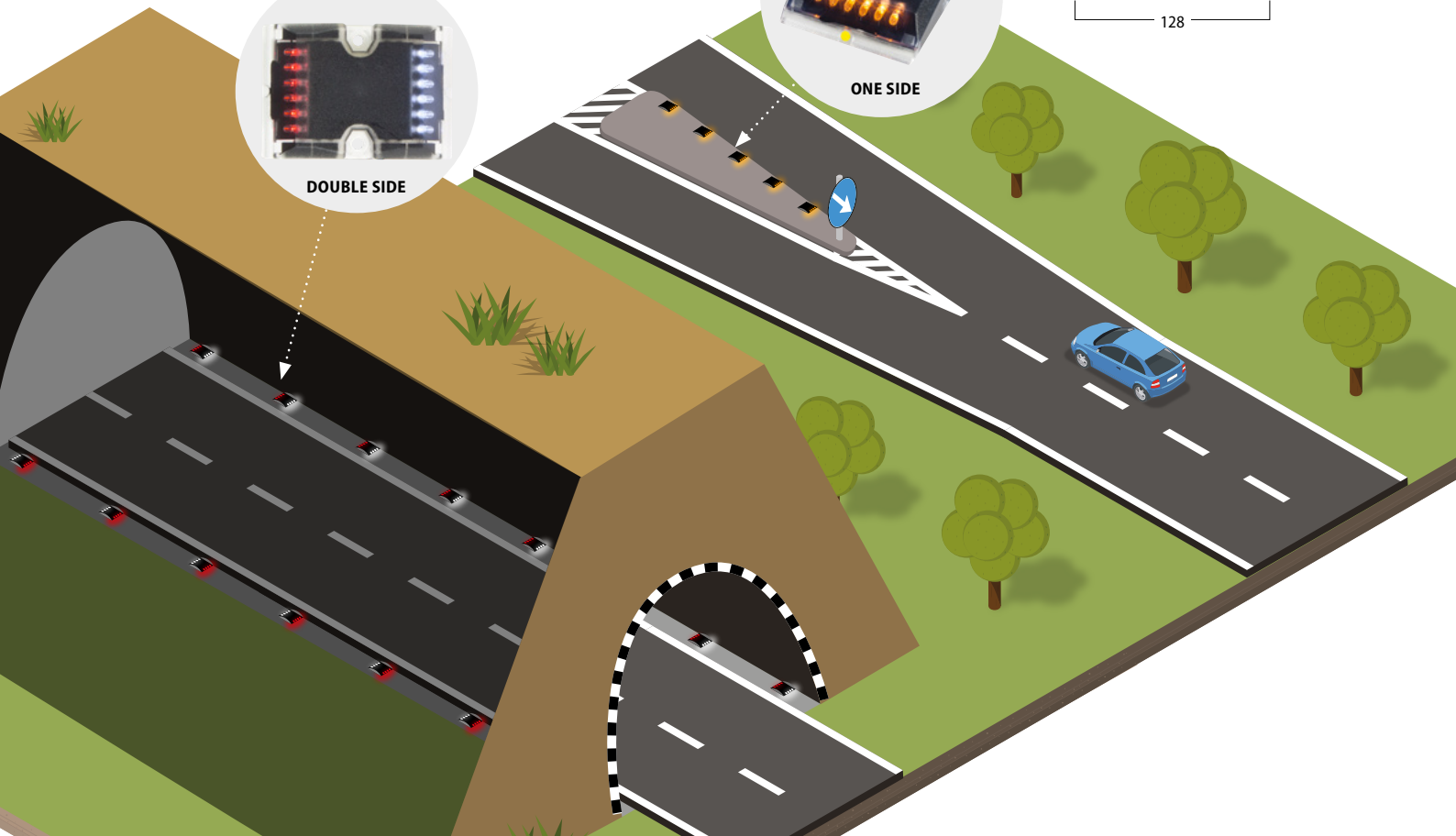
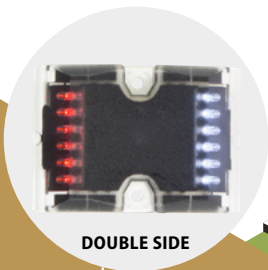
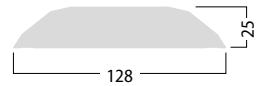
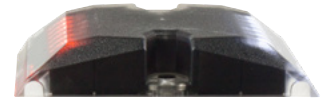
**LED marker** for tunnels, roundabout, dangerous point, edges, etc.



**6 high-brightness LEDs** each side

The product must be installed outside of the roadway

Compliance	<b>EN1463-3</b>
LED colour	<span style="color: yellow;">●</span> Single side <span style="color: red;">●</span> <span style="color: white;">○</span> <span style="color: yellow;">●</span> <span style="color: yellow;">●</span> Double side Other colours on request
Light	<b>Steady</b> <b>Sync. flashing</b> with external flashing control unit <b>Sequence</b> with external control unit
Powered by	<b>11...48 VDC</b>
Max. power consumption	Single side: <b>0.44 W@48 V</b> Double side: <b>0.85 W@48 V</b>
Material	<b>Polycarbonate V0</b>
Dimensions	<b>90 x 128 x 25 mm</b>



# Side 25

## TECHNICAL FEATURES



### Description

NOT CARRIAGEABLE LED road marker. The product must be installed outside the roadway

### OPTICAL FEATURES

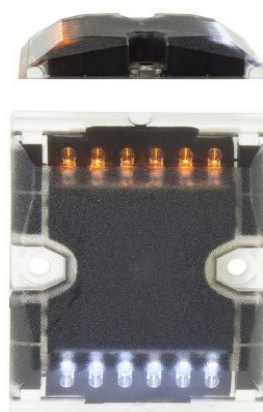
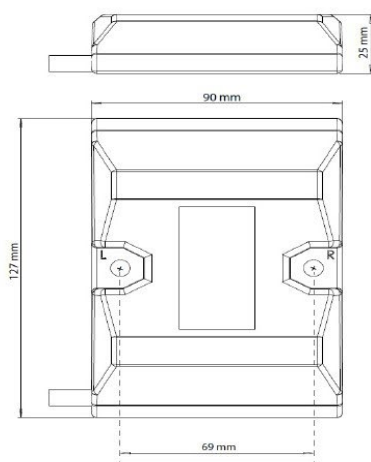
Compliance	EN1463-3		
Light source	6 LEDs each side		
Optics	Single-Side / Double-Side		
Colour	Amber / Red-White		
Luminous Intensity	> 25 cd		
Type of Light	Steady Light	Flashing Light	Sequential flashing light
Optical Group Life	> 50'000 Hours		

### ELECTRICAL FEATURES

Power Supply	11 Vdc ÷ 48 Vdc		
Power consumption	0.44 W@48V (Single-Side)	0.85 W@48V (Double-Side)	
Insulation class	Class III		

### MECHANICAL FEATURES

Operating Temperature	-10 °C ÷ +55 °C		
Material	Polycarbonate ULV0		
IP Protection Degree	IP67		
Weight	280 g		
Dimensions	90 mm x 128 mm x 25 mm		
Fixing	2 fixing holes		



Rev. 3.0  
06/04/2023

Approved TEC

Approved AQ



**LED lighting device for the illuminations of escape routes in tunnels, with polycarbonate body and stainless steel base.**



Available in different operating modes:

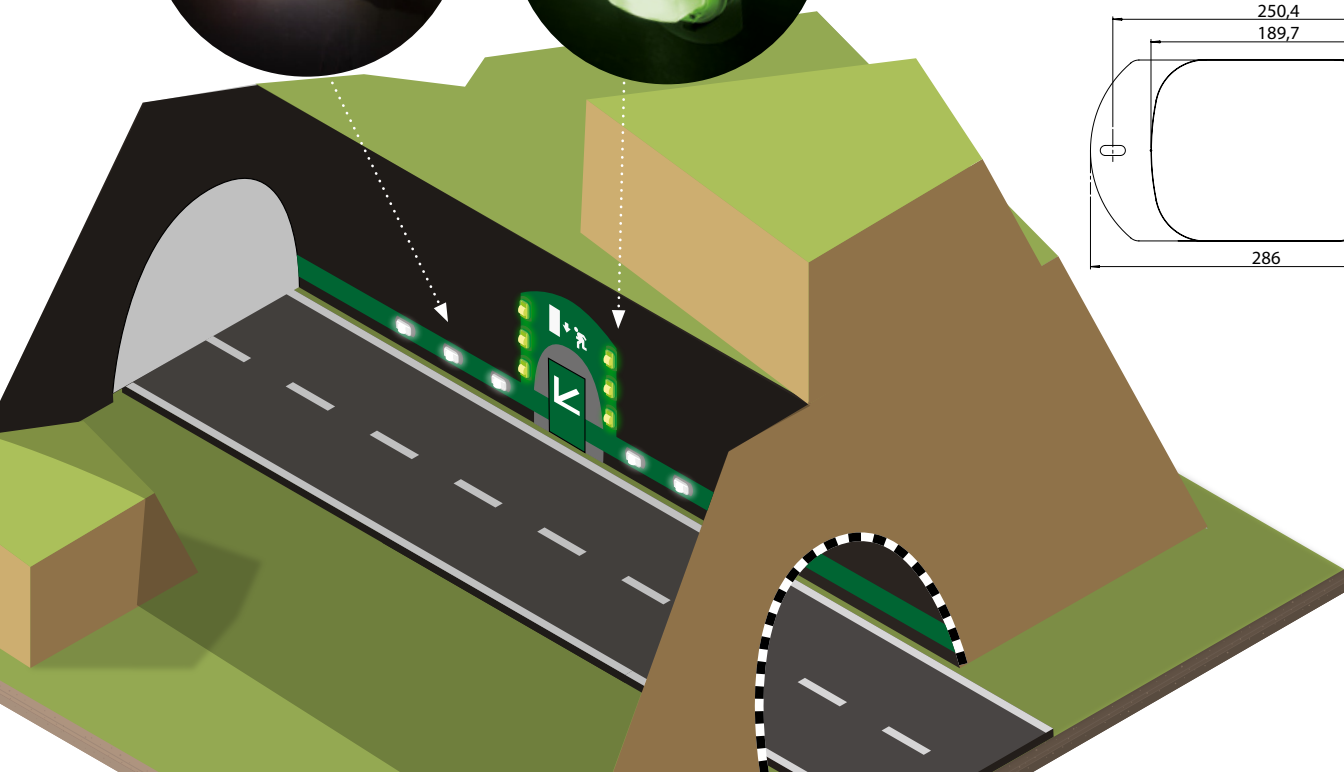
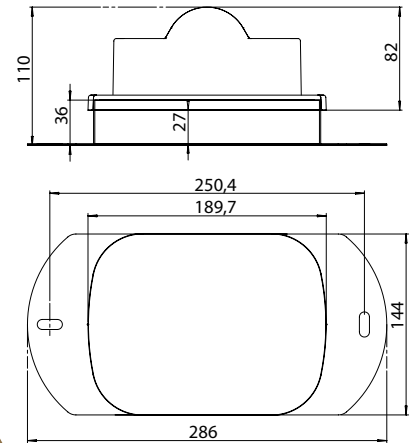
- Reverse polarity
- Voltage switch (24V-48V)
- Third wire with PWM.

External or internal connection on ceramic terminal block to ensure the continuity of power in case of fire.

**In compliance with EN16276**  
**In compliance with EN 1838 (ANAS Guidelines)**



LED colour		
Light	<b>&gt; 15 cd</b>	<b>&gt; 100 cd</b>
Absorbed power	<b>5 W</b>	<b>6 W</b>
Powered by	<b>12÷48 VDC</b>	
Material	<b>Polycarbonate UL94-V0 Inox AISI 304</b>	
Dimensions	<b>286 x 144 x 110 mm</b>	



## TECHNICAL FEATURES



### Description

Luminous device for the escape routes of the tunnels. Compliant with EN16276.

### OPTICAL FEATURES

Light source	6 LEDs	
Optics	Compliant with EN16276	
Optical group lifetime	> 100'000 hours	
Colour	White (6000 K)	Green (525 nm)
Luminous intensity	> 15 cd steady light	100 cd flashing mode 0,2 ÷ 2Hz
Luminous intensity (low-power mode)	< 1 cd steady light	< 20 cd steady light

### ELECTRICAL FEATURES

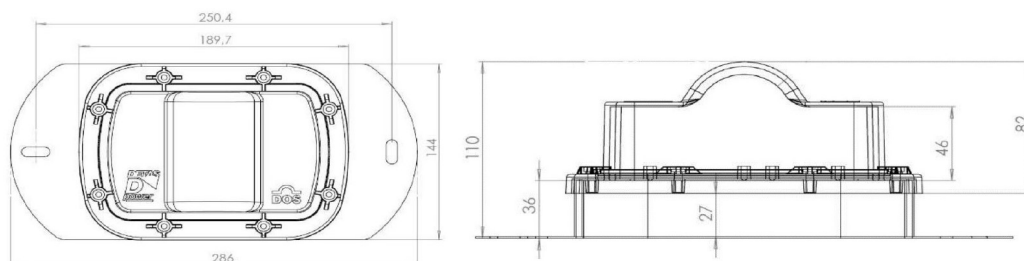
Power	5 W (0.5 W low-power mode)	6 W (1 W low-power mode)
Supply voltage	12 ÷ 48 Vdc SELV	
Connections	Internal on ceramic clamps, resistant to heat (max 1'000°C)	
Cables and cable glands	Maximum section 6 mm <sup>2</sup> ; PG16 cable glands (PG20 on request)	
Protections	Reverse polarity; Overvoltages; Overcurrents	
Insulation class	Class III	
Control system	<ul style="list-style-type: none"> <li>•Third Wire with PWM (100 Hz ÷ 1 KHz, 0 ÷ 100% DC, MAX 48V)</li> <li>•Voltage Change (24V-48V)</li> <li>•Reverse Polarity</li> </ul>	

### MECHANICAL FEATURES

IP protection class	IP65
IK code	IK10
Material	Polycarbonate V0 UL94 - Inox AISI 304
Dimensions	286 x 144 x 110 mm
Total weight	500 g
Operating temperature	-20 °C ÷ +40 °C
Fixing	<ul style="list-style-type: none"> <li>•2 holes for fixing to the wall</li> <li>•Spacer for direct wall mounting with lateral cable exit</li> </ul>

### INSTALLATION

Installation height	1 m (MAX 1.5 m)
Interdistance	12.5 m (MAX 25 m)



Rev. 3.0  
23/12/2022



Approved TEC



Approved AQ

# Kronos

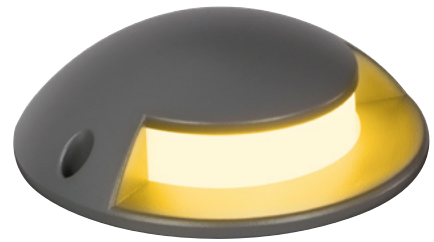
**Luminous LED insert with very low power consumption.**



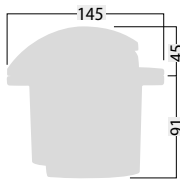
*Ideal for cuspidal points, roundabouts and fatal edges.*

*Ready for installation.*

*Suitable to photovoltaics.*



LED colour	● ○	Other colours on request	
Light	<b>Steady</b>	<b>Sync. flashing</b> with external flashing control unit	<b>Sequence</b> with external control unit
Powered by	<b>12 VDC</b> <b>230 VAC classe II</b>	Max. power consumption	<b>6 W</b>
Material	<b>Die cast aluminum body</b> <b>PP formwork</b>		
Dimensions	<b>ø145 x 136 mm</b>	Dome height	<b>45 mm</b>



# Kronos

## TECHNICAL FEATURES



### Description

**NOT CARRIAGEABLE** LED road marker. The product must be installed outside the roadway

### OPTICAL FEATURES

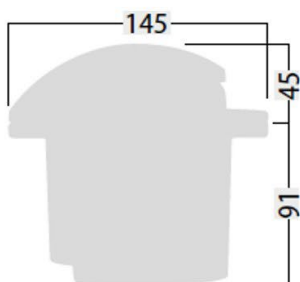
Compliance	UNI EN1463-3		
Light source	1 LED / 2 LED		
Optics	Single-Side / Double-Side		
Colors	Amber / White		
Luminous Intensity	> 60 cd		
Type of Light	Steady Light	Flashing Light	Sequential flashing light
Optical Group Life	> 50'000 Hours		

### ELECTRICAL FEATURES

Power Supply	11 Vdc ÷ 48 Vdc	230 Vac
Insulation class	Class III	Class II
Power consumption	6 W	

### MECHANICAL FEATURES

Operating Temperature	-10 °C ÷ +55 °C	
Material	Die cast aluminium (formwork in Polypropylene)	
IP Protection Degree	IP67	
Weight	1.3 kg	
Dimensions	Ø 145 mm x 136 mm (45 mm above ground)	
Fixing	Recessed in pavement	



Rev. 3.0  
06/04/2023

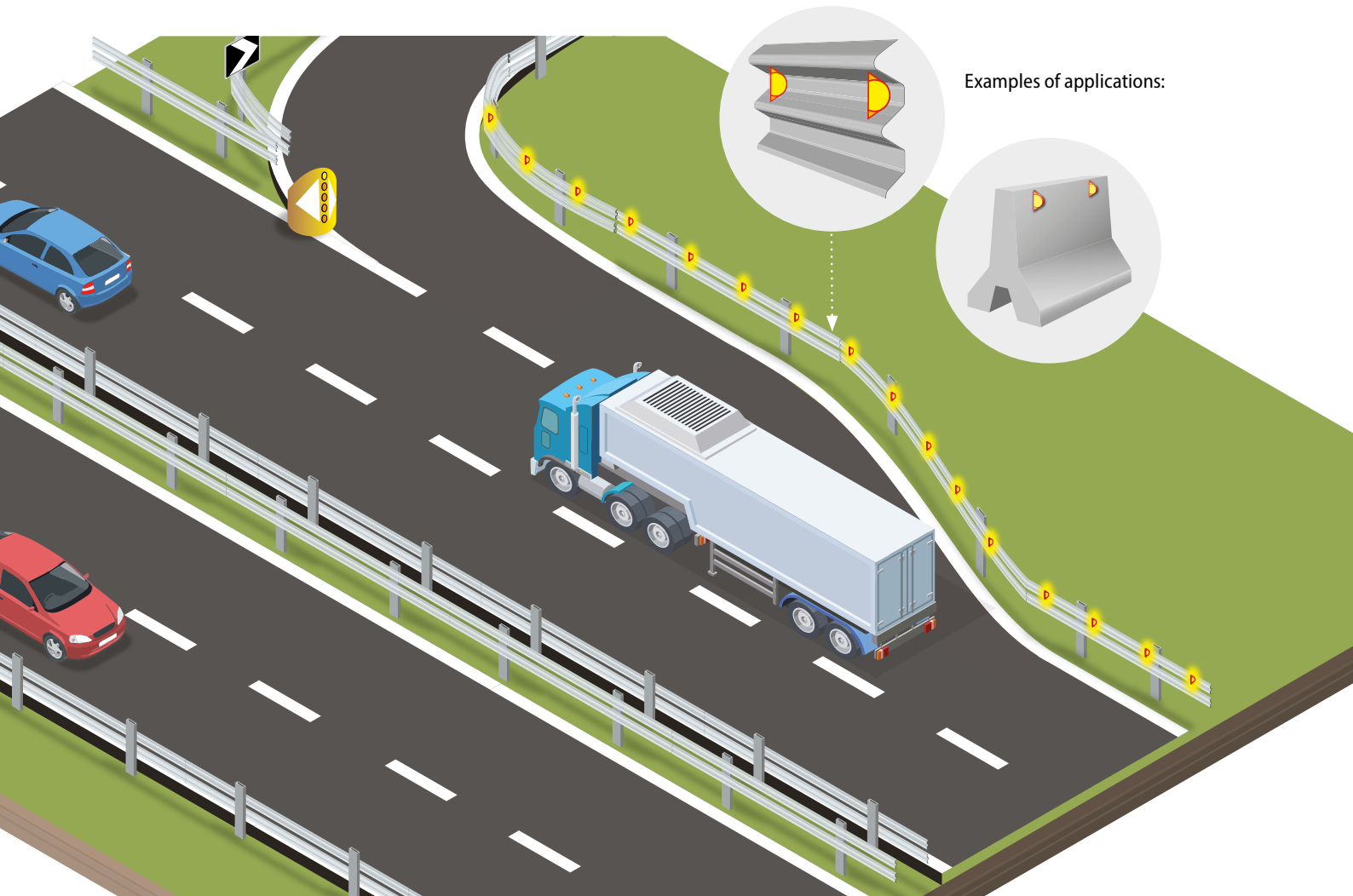
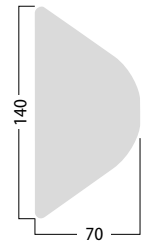
Approved TEC

Approved AQ

## LED marker for guardrail.

RGR, thanks to its high visibility and low power consumption, is an excellent solution for dangerous curves, motorway exits, tunnels and all the other dangerous situations on the road. Ideal for zones with high presence of fog.

Approved	EN12352 L2H		
LED colour	●		
Light	<b>Steady</b>	<b>Sync. flashing</b> with external flashing control unit	<b>Sequence</b> with external control unit
Powered by	<b>18...48 VDC</b>	Power consumption (steady light)	<b>3.84 W@48 V</b>
Material	<b>ABS</b>		
Dimensions	<b>70 x 140 x 45 mm</b>		



Examples of applications:

## TECHNICAL FEATURES



Description	
LED marker for guard-rails.	

### OPTICAL FEATURES

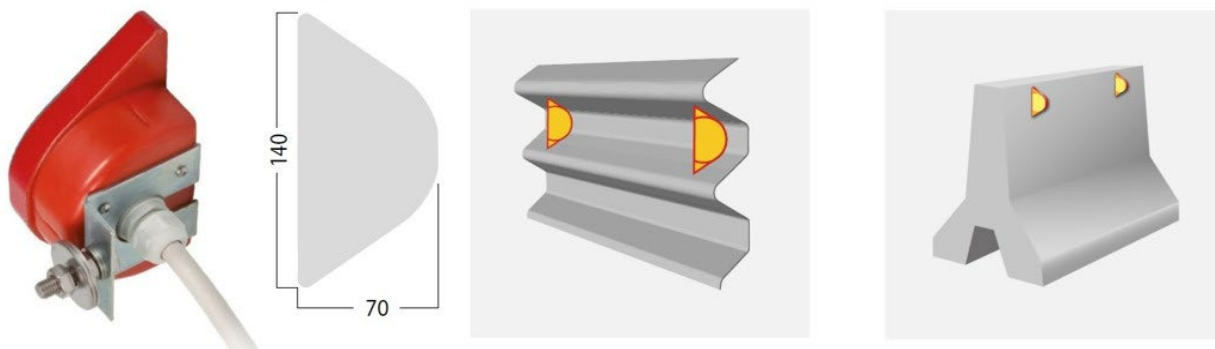
Compliance	UNI EN12352: L2H		
Light source	10 LED		
Optics	Single-Side		
Colors	Amber / Red		
Luminous Intensity	> 300 cd		
Type of Light	Steady	Synchronous flashing	Sequential flashing
Optical Group Life	> 50'000 Hours		

### ELECTRICAL FEATURES

Power Supply	18 Vdc ÷ 48 Vdc
Consumption	3.9 W

### MECHANICAL FEATURES

Operating temperature	-10°C ÷ +55°C
Material	ABS
IP Protection Degree	IP65
Weight	500 g
Dimensions	70 mm x 140 mm x 45 mm
Fixing	Shaped bracket for fixing to guard-rails or new-jersey



Rev. 3.0 04/02/2023		Approved TEC		Approved AQ
------------------------	--	--------------	--	-------------

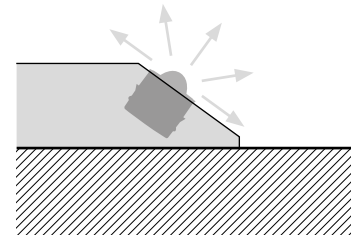
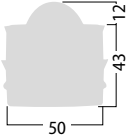
## mini **GlassTop**

### Carriageable

Mechanical resistance: 18 t

Even if carriageable the product should be installed outside of the roadway

Self cleaning



Certified	<b>EN1463-2</b>
Reflection	<b>360° horizontally 180° vertically</b>
Material	<b>Tempered glass</b>
Dimensions	<b>Ø 50 mm</b>
Dome height	<b>12 mm</b>

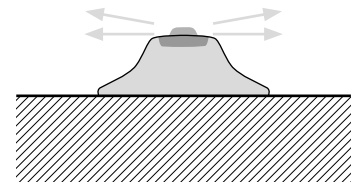
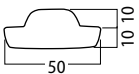
## micro **GlassTop**

### The smallest tempered glass road marker available on the market

Mechanical resistance: 6 t

The product should be installed outside of the roadway

Self cleaning



Compliance	<b>EN1463-2</b>
Reflection	<b>360° horizontally</b>
Material	<b>Tempered glass</b>
Dimensions	<b>Ø 50 mm</b>
Dome height	<b>10 mm</b>

# micro GlasTop

## TECHNICAL FEATURES



### Description

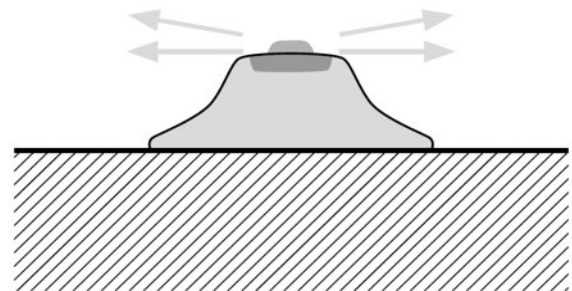
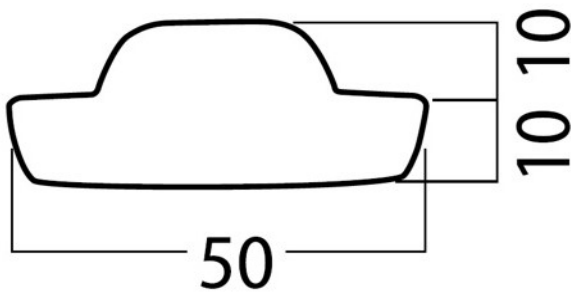
Road reflective marker. Even if carriageable the product must be installed outside of the roadway.

### OPTICAL FEATURES

Compliance	UNI EN1463-2
Light source	Reflection
Optics	360° on the horizontal plane

### MECHANICAL FEATURES

Mechanical resistance	6 t
Operating Temperature	-35 °C ÷ +80 °C
Material	Tempered Glass
Weight	60 g
Dimensions	Ø 50 mm x 20 mm (10 mm above ground)
Fixing	Recessed in pavement



Rev. 3.0  
04/02/2023

Approved TEC

Approved AQ



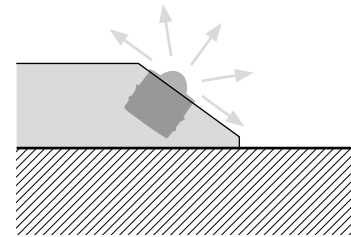
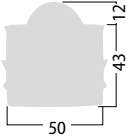
## mini **GlassTop**

### Carriageable

Mechanical resistance: 18 t

Even if carriageable the product should be installed outside of the roadway

Self cleaning



Certified	<b>EN1463-2</b>
Reflection	<b>360° horizontally 180° vertically</b>
Material	<b>Tempered glass</b>
Dimensions	<b>Ø 50 mm</b>
Dome height	<b>12 mm</b>

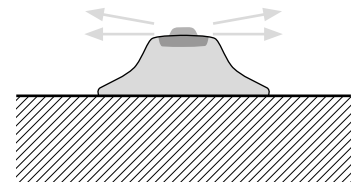
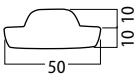
## micro **GlassTop**

### The smallest tempered glass road marker available on the market

Mechanical resistance: 6 t

The product should be installed outside of the roadway

Self cleaning



Compliance	<b>EN1463-2</b>
Reflection	<b>360° horizontally</b>
Material	<b>Tempered glass</b>
Dimensions	<b>Ø 50 mm</b>
Dome height	<b>10 mm</b>

# mini GlassTop

## TECHNICAL FEATURES



### Description

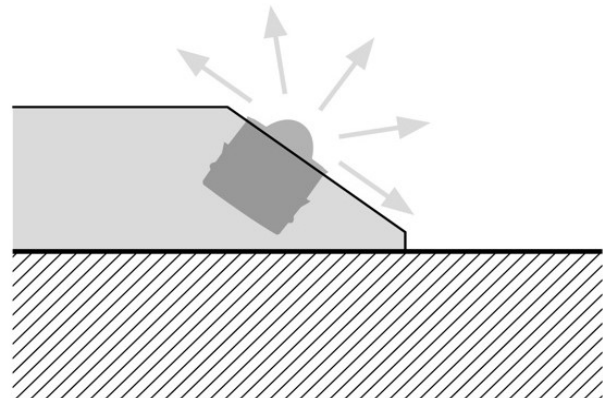
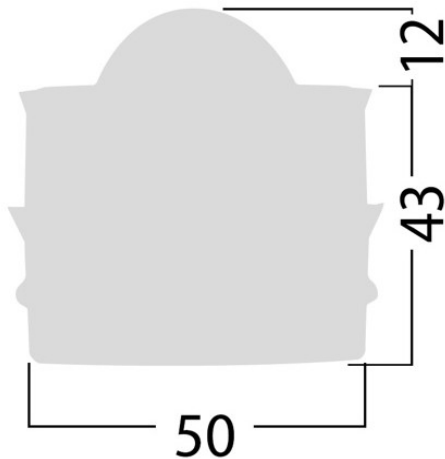
Road reflective marker. Even if carriageable the product must be installed outside of the roadway.

### OPTICAL FEATURES

Compliance	UNI EN1463-2	
Light source	Reflection	
Optics	360° on the horizontal plane	180° on the vertical plane

### MECHANICAL FEATURES

Mechanical resistance	18 t
Operating Temperature	-35 °C ÷ +80 °C
Material	Tempered Glass
Weight	150 g
Dimensions	Ø 50 mm x 55 mm (12 mm above ground)
Fixing	Recessed in pavement



Rev. 3.0  
04/02/2023

Approved TEC

Approved AQ

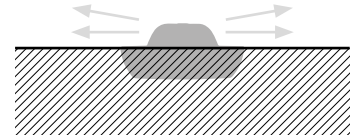
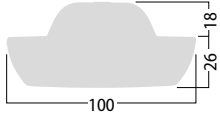
# GlassTop

## Carriageable

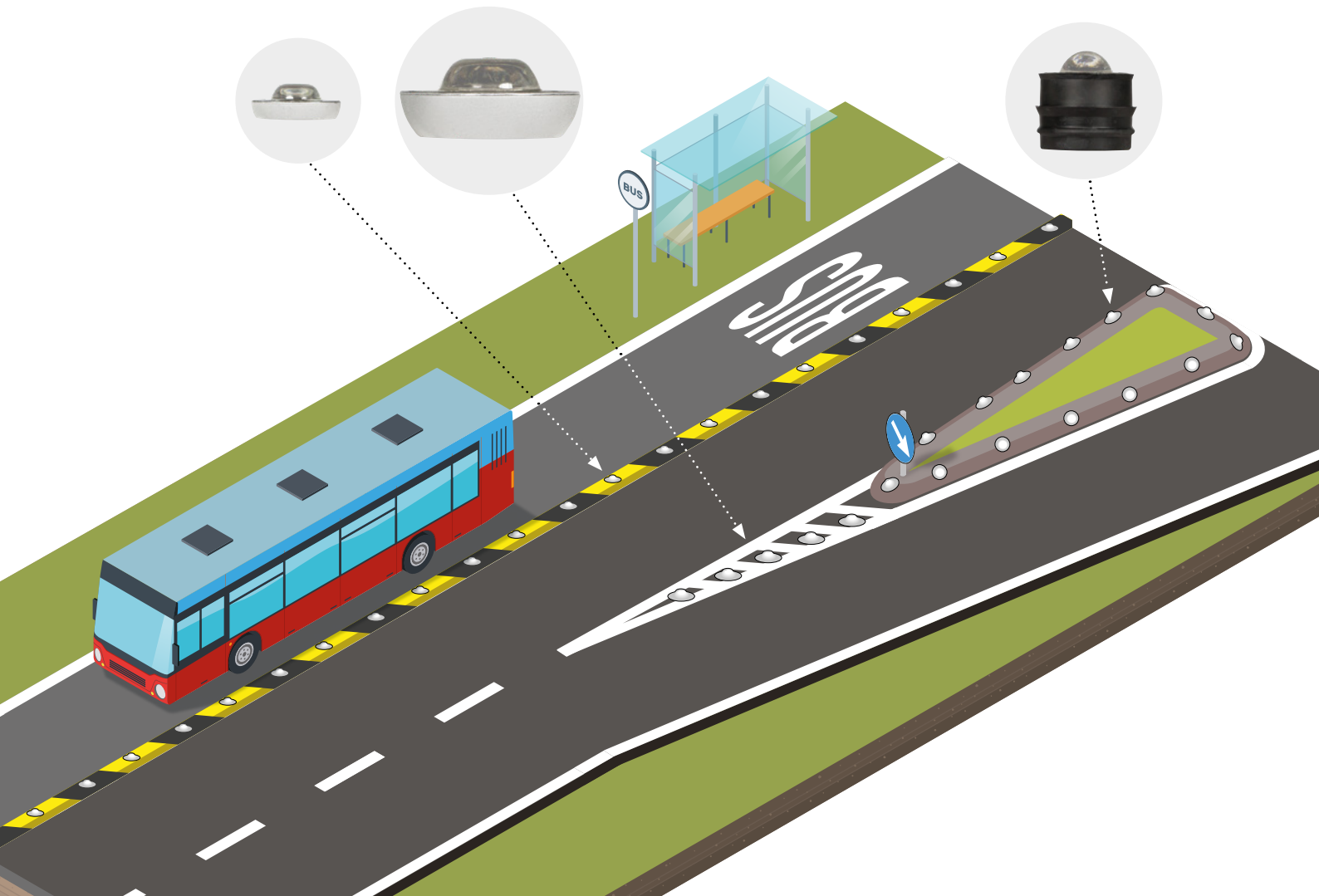
Mechanical resistance: 40 t

Even if carriageable the product should be installed outside of the roadway

Self cleaning



Approved	EN1463-2
Reflection	360° horizontally
Material	Tempered glass
Dimensions	Ø 100 mm
Dome height	18 mm



# GlassTop

## TECHNICAL FEATURES



### Description

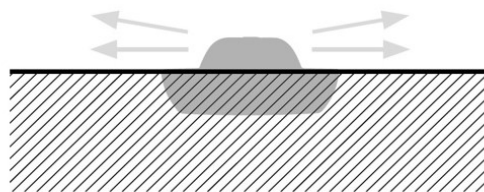
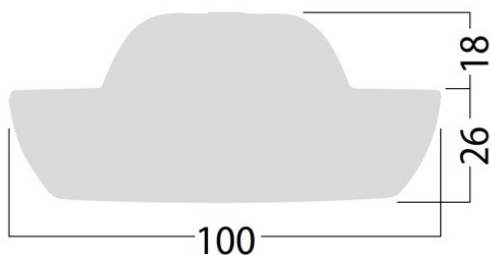
Road reflective marker. Even if carriageable the product must be installed outside of the roadway.

### OPTICAL FEATURES

Compliance	UNI EN1463-2
Light source	Reflection
Optics	360 ° on the horizontal plane

### MECHANICAL FEATURES

Mechanical resistance	40 t
Operating Temperature	-35 °C ÷ +80 °C
Material	Tempered Glass
Weight	520 g
Dimensions	Ø 100 mm x 44 mm (18 mm above ground)
Fixing	Recessed in pavement



Rev. 3.0 04/02/2023	Approved TEC	Approved AQ
------------------------	--------------	-------------

Filename: Y:\archivio\dpower\Prodotti\Impianti Fissi - Fixed Safety Devices\Marker stradali - Road markers\GlassTop\Datasheets\ (ENG) GlassTop.pdf

Prodotto: GlassTop

Riga: 58

ENG

Immagine in alto: Y:\archivio\dpower\Prodotti\Impianti Fissi - Fixed Safety Devices\Marker stradali - Road markers\GlassTop\Photos\GlassTop.jpg

LINGUA:

- Italiano
- English
- Français

Immagine in basso: Y:\archivio\dpower\Prodotti\Impianti Fissi - Fixed Safety Devices\Marker stradali - Road markers\GlassTop\Photos\\_datasheet.jpg

Spazi vuoti: 28

Prodotti caricati: 47

Description|Road reflective marker. Even if carriageable the product must be installed outside of the roadway.

EXPORT

EXPORT  
ALL LANGUAGES

<OPTICAL FEATURES>

Compliance|UNI EN1463-2

Light source|Reflection

Optics|360 ° on the horizontal plane

<MECHANICAL FEATURES>

Mechanical resistance|40 t/m<sup>2</sup>

Operating Temperature|-35 °C ÷ +80 °C

Material|Tempered Glass

Weight|520 g

Dimensions|Ø 100 mm x 44 mm (18 mm above ground)

Fixing|Recessed in pavement

OPEN PATH

# PowerGround 3

## In-pavement High Power LED

(>200cd)

Carriageable

Mechanical resistance: 50 t

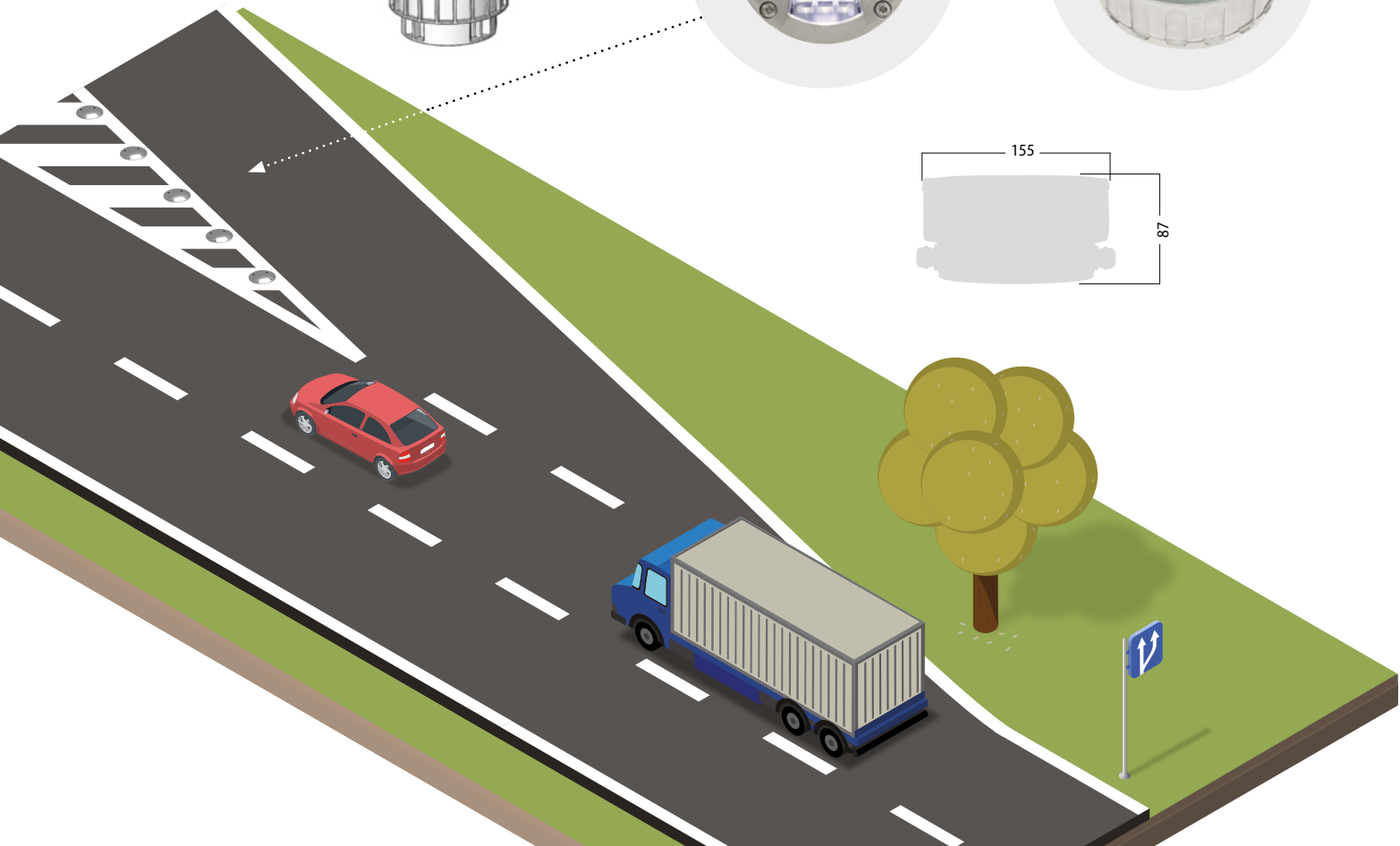
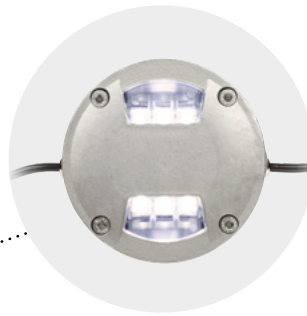
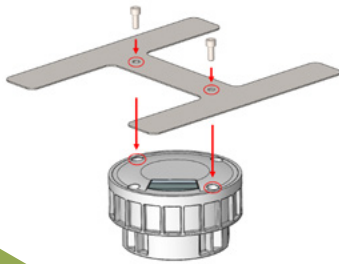
Available in single side or double side version



Compliance	<b>EN1463-3</b>
LED colour	● ○ Patented LED optics
Light	<b>Steady</b> <b>Sync. flashing</b> with external flashing control unit
Powered by	<b>10...48 VDC</b>
Max. power consumption	○ Single side: <b>3.6 W</b> ○○ Double side: <b>7.2 W</b>
Material	<b>Steel</b>
Dimensions	<b>ø155 x 87 mm</b>



Template supplied



# PowerGround 3

## TECHNICAL FEATURES



### Description

Road marker with high luminous power LED, drive-over and available in single-sided or double-sided version.

### OPTICAL CHARACTERISTICS

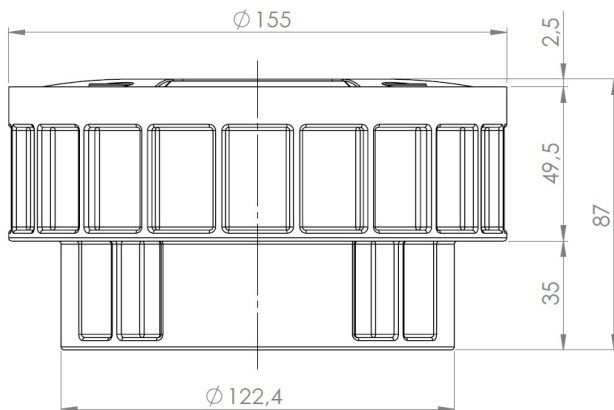
Standards	UNI EN1463-3	
Light source	3 power LEDs	3x2 power LEDs
Optics	Single side	Two sides
Colour	White or Amber	
Luminous intensity	>200 cd	
Duration of the optical group	> 50'000 hours	

### ELECTRICAL CHARACTERISTICS

Power supply	10 Vdc ÷ 48 Vdc	
Power	3.6 W	7.2 W
Appliance class	Class III	

### MECHANICAL CHARACTERISTICS

Mechanical strenght	50 t	
Operating temperature	-25°C ÷ +55°C	
Material	Stainless steel AISI 304	
IP code	IP68 installed	
Dimensions	Ø 155 mm x 87 mm	
Fixing	Floor embedded	



Rev. 3.3  
24/11/2022

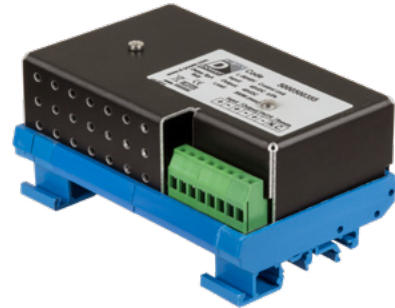
Approved TEC

Approved AQ

## Flashing control unit

Flashing control unit for road marker series.

Connectable markers	Nr. max.
Side 25	160
Kronos	40
RGR	60
PowerGround 3 HP	65



Input voltage	12/48 VDC
Functions	night dimming remote control
Duty cycle	50% 20% <10%
Dimensions	125 x 80 x 50 mm

## Power supplies

AC-DC DIN rail mountable power supply.

Model	GSA SWP10	GSA SWP20
Certifications	UL, cUL, CE	UL, cUL, CE
Input voltage	85...264 VAC	85...264 VAC
Output wattage	240 W	480 W
Output voltage	48 VDC	48 VDC
Output current	5 A	10 A
Efficiency	>94%	>94%



GSA SWP10



GSA SWP20