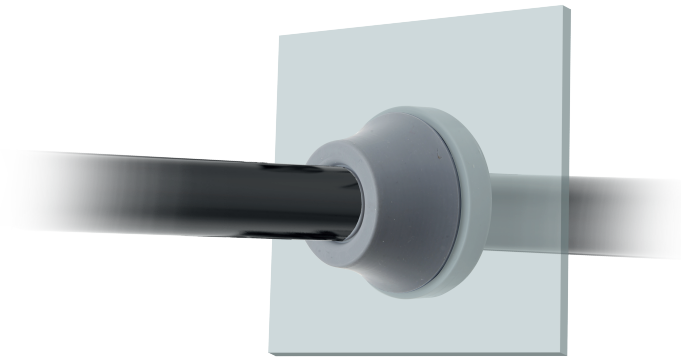




Round cable entry plates for single cable

- ▶ Metric size
- ▶ Quick installation
- ▶ Cost effective
- ▶ High degree of protection (IP67)
- ▶ Grey color (black on request)



Model	Code	Cable Nr. - Ø [mm]	Dimensions [mm]		Wall thick.	Pcs pack
			Ø Hole	Ø Cable entry		
RCS M12G	1732067012	1 - 3-5	12,5	20	0,5 - 2	100
RCS M16G	1732067016	1 - 5-9	16,5	21	1-4	
RCS M20G	1732067020	1 - 7-13	20,5	25,5		
RCS M25G	1732067025	1 - 10-17	25,5	30,5		
RCS M32G	1732067032	1 - 14-20	32,5	38,5		
RCS M40G	1732067040	1 - 19-26	40,5	48,5		
RCS M50G	1732067040	1 - 26-34	50,5	60,5		

The cable entry RCS series allow single cables without connectors to pass through walls up to 4mm thick. Simply puncture the outer membrane slightly and push the cable through the grommet. They are available in gray for cable diameters from 4 to 34mm.

Technical data

Material: EPDM

Flammability: self-extinguishing acc. to UL94-V0

Temperature: -40°C... +110°C (static)

Features: halogens and silicone free

Wall thickness: from 0,5 to 4 mm

Related products

HY360 hydraulic punch driver